

# MINERAL RESOURCES OIL AND GAS

The principle minerals commercially sought in the Township are oil and gas. Well drilling has followed a pattern of the Silurian-Niagaran Reef. In the 70's and 80's, oil and gas activity boomed in Bear Lake Township. In the 90's the wells began to lose production with some wells being plugged.

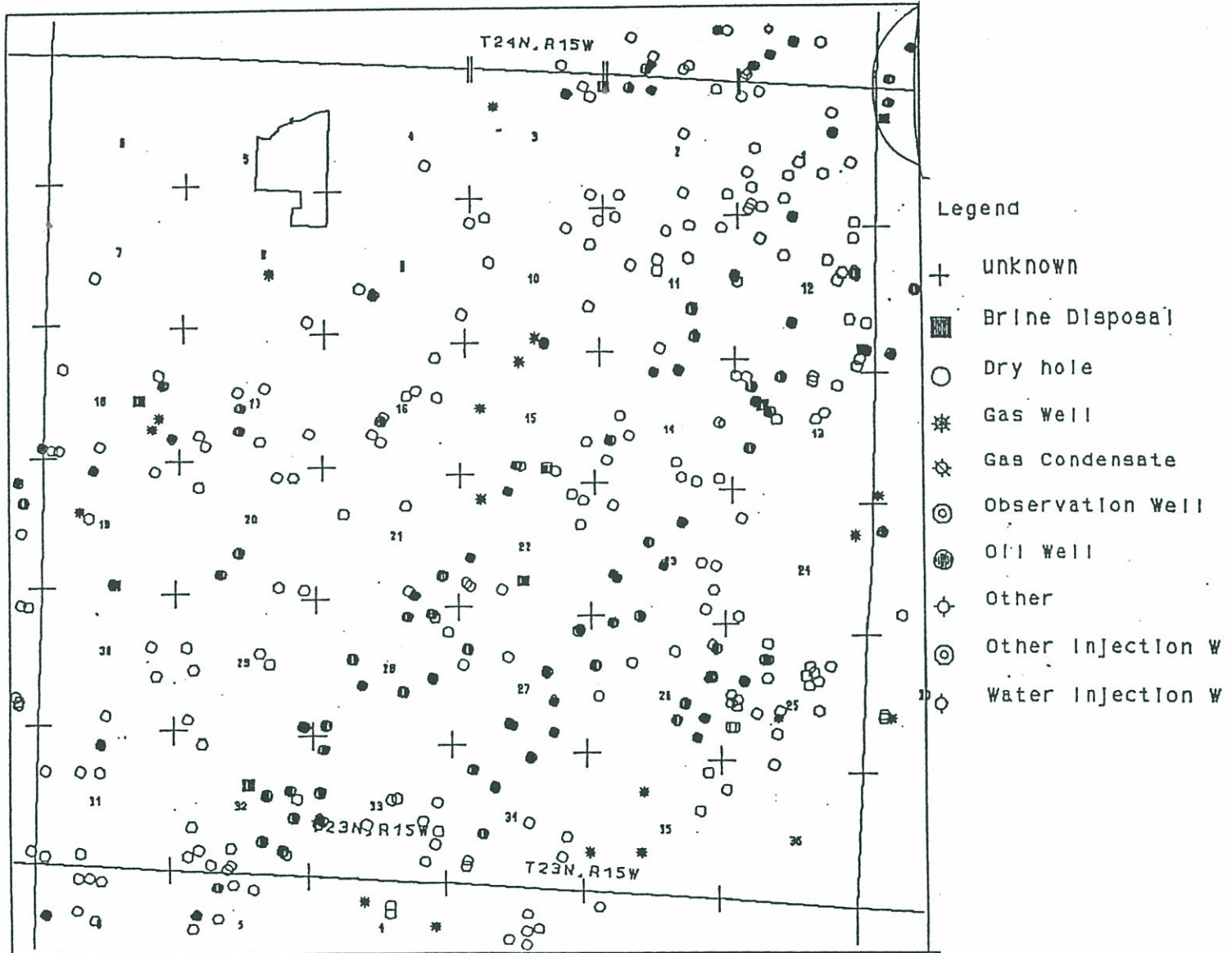
In 1994, new technology was started with lateral drilling of some of the plugged wells, which brought them back to much higher production.

In 1995, Antrim Reef activity was begun with test wells.

The oil and gas industry is responsible for a large flow of money in the Township mainly through royalties and personal property taxes. Direct employment from oil and gas activity is not significant. Indirect employment from servicing oil and gas wells and the multiplier effect of the royalties has had a large impact on the local economy.

# BEAR LAKE TOWNSHIP

## OIL / GAS / OTHER WELLS



# WILDLIFE CHARACTERISTICS

## ~ BIRDS ~

SANDHILL CRANES - *Found infrequently in the Township but generally increasing in number.*

RUFFED GROUSE - *Low, decreasing amount of habitat available for these birds.*

SHARP-TAILED GROUSE - *None.*

SPRUCE GROUSE - *None.*

MOURNING DOVE - *Low to Medium.*

RING-NECKED PHEASANT - *Wild birds low to non-existent, may be some pheasants the result of releases by private individuals. Hard winters usually fatal to these birds.*

BOBWHITE QUAIL - *Non-existent except when released by private individuals.*

WILD TURKEY - *Medium population.*

WOODCOCK - *Medium population but decreasing in numbers. Habitat is decreasing as hunting pressure increases.*

WATERFOWL - *Low to medium, the continental population of most species of waterfowl are generally low. Canadian Geese are the exception.*

BALD EAGLES - *No nesting birds but Manistee River eagles probably use Bear Lake Township as part of total range.*

# WILDLIFE CHARACTERISTICS

## ~ MAMMALS ~

OPOSSUM - *Medium density.*

COTTONTAIL RABBIT - *Medium to high density.*

SNOWSHOE HARE - *Low density.*

GRAY AND BLACK SQUIRREL - *Low to medium density.*

FOX SQUIRREL - *Low to medium density.*

RED SQUIRREL - *Abundant.*

NORTHERN FLYING SQUIRREL - *Common but rarely seen - nocturnal.*

BEAVER - *Medium*

MUSKRAT - *Low to medium.*

PORCUPINE - *Low to medium.*

COYOTE - *Medium and increasing in number, populations subject to mortality due to mange.*

RED FOX - *Low to medium.*

BLACK BEAR - *Low but increasing in number, may have resident bears in Township.*

RACCOON - *High.*

MARTEN - *None.*

FISHER - *None.*

LEAST WEASEL - *Part of range but no actual records of sights.*

SHORT-TAILED WEASEL - *Same as the Least Weasel.*

LONG-TAILED WEASEL - *Occur throughout the State.*

MINK - *Low to medium.*

BADGER - *Part of range but rarely seen.*

STRIPED SKUNK - *Medium to high density.*

LYNX - *None.*

RIVER OTTER - *Low to medium.*

BOBCAT - *Low density, rarely seen.*

DEER - *Medium density.*

COUGAR - *Low density, rarely seen.*

## ~ BLACK BEAR ~

In the late 60's or 70's the DNR placed Black Bear here to consume large amounts of Salmon that were dying on Creek banks at the end of their spawning run. The smell of dying Salmon is very offensive so to alleviate the problem it is believed that the bears were introduced to help balance nature. In the late 70's Roy Kuenzer did kill a black bear here in the township in self defense.

There are many other species of birds and mammals that occur in Bear Lake Township. The previous lists include most of the obvious and economically important species. There are important wetland types that provide much needed winter deer habitat and stop over areas for migrating waterfowl. The upland types are utilized by many different birds and mammals, many of which are listed previously. There are no endangered or threatened mammals or birds residing in Bear Lake Township.

# CLIMATE

The location of Bear Lake Township in Manistee County is important to the area in terms of weather and climate due to the fact it is located on Lake Michigan's coastline. The lake provides a temperate climate resulting in a major fruit belt along the Lake Michigan shoreline. The prevailing westerly winds crossing the lake give Bear Lake Township cool summers and warmer winters. This retards early Spring warming, delaying fruit blossoms until after late frosts and prevent early autumn frost. Lake effect snow also contributes to a higher than normal annual snow cover for this altitude. Altitude in this areas ranges from 720 feet to 1100 feet. The altitude of Bear lake (the lake itself) is 768 feet above sea level.

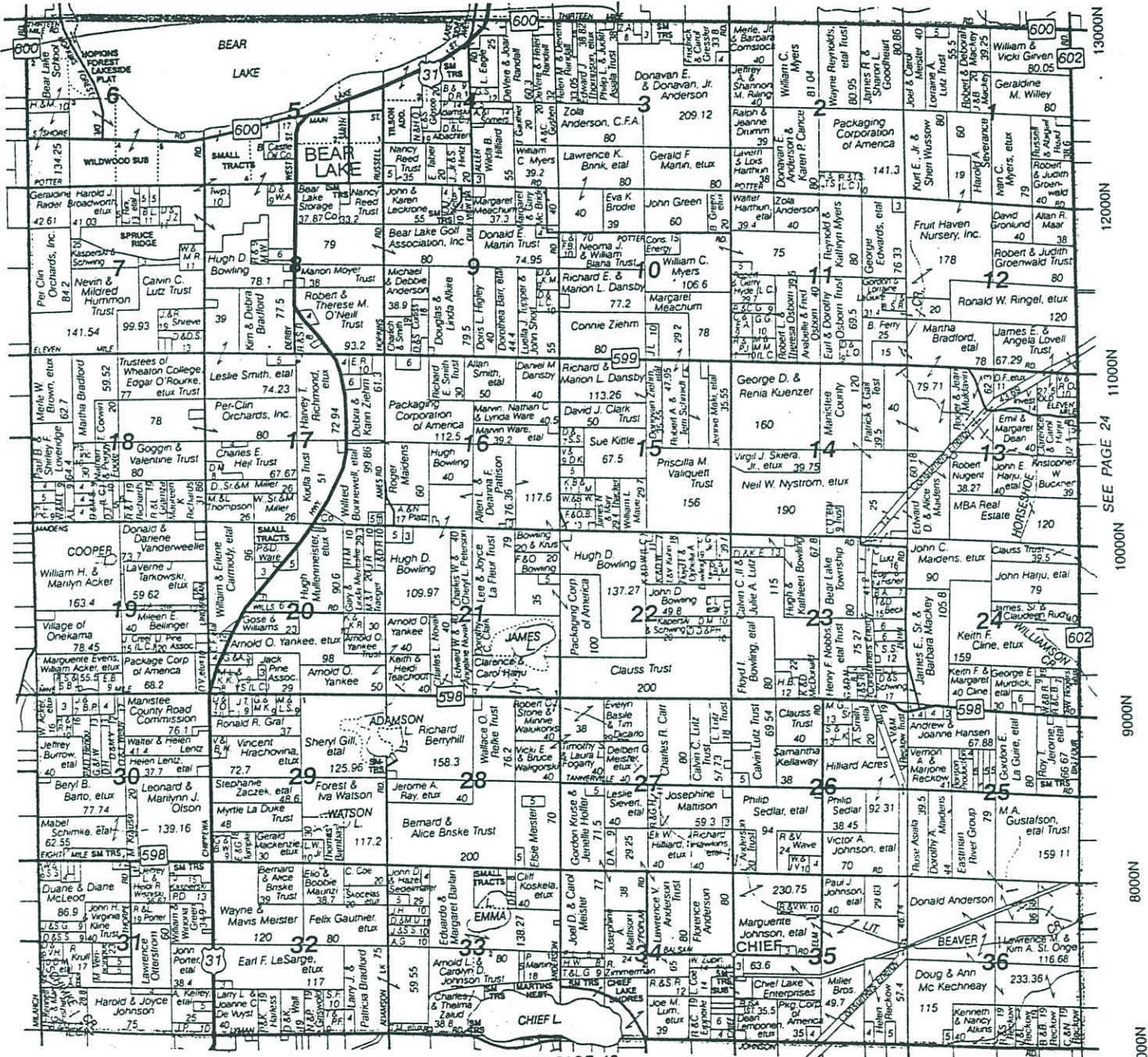
Heaviest rainfalls occur during the Fall months of September and October due to westerly winds picking up moisture over Lake Michigan. Snowfalls totals 66.4 inches and is about 20 inches more than the average on the east side of the state at the same altitude. The average rainfall is 30.1 inches in a year.

The average warm months temperature during the day hours, runs between 60 and 80 degrees. The average winter months temperature, during the daytime hours, runs between 0 and 30 degrees above Fahrenheit. (See also Geological Features).

# BEAR LAKE TOWNSHIP

T.23N. - R.15W.

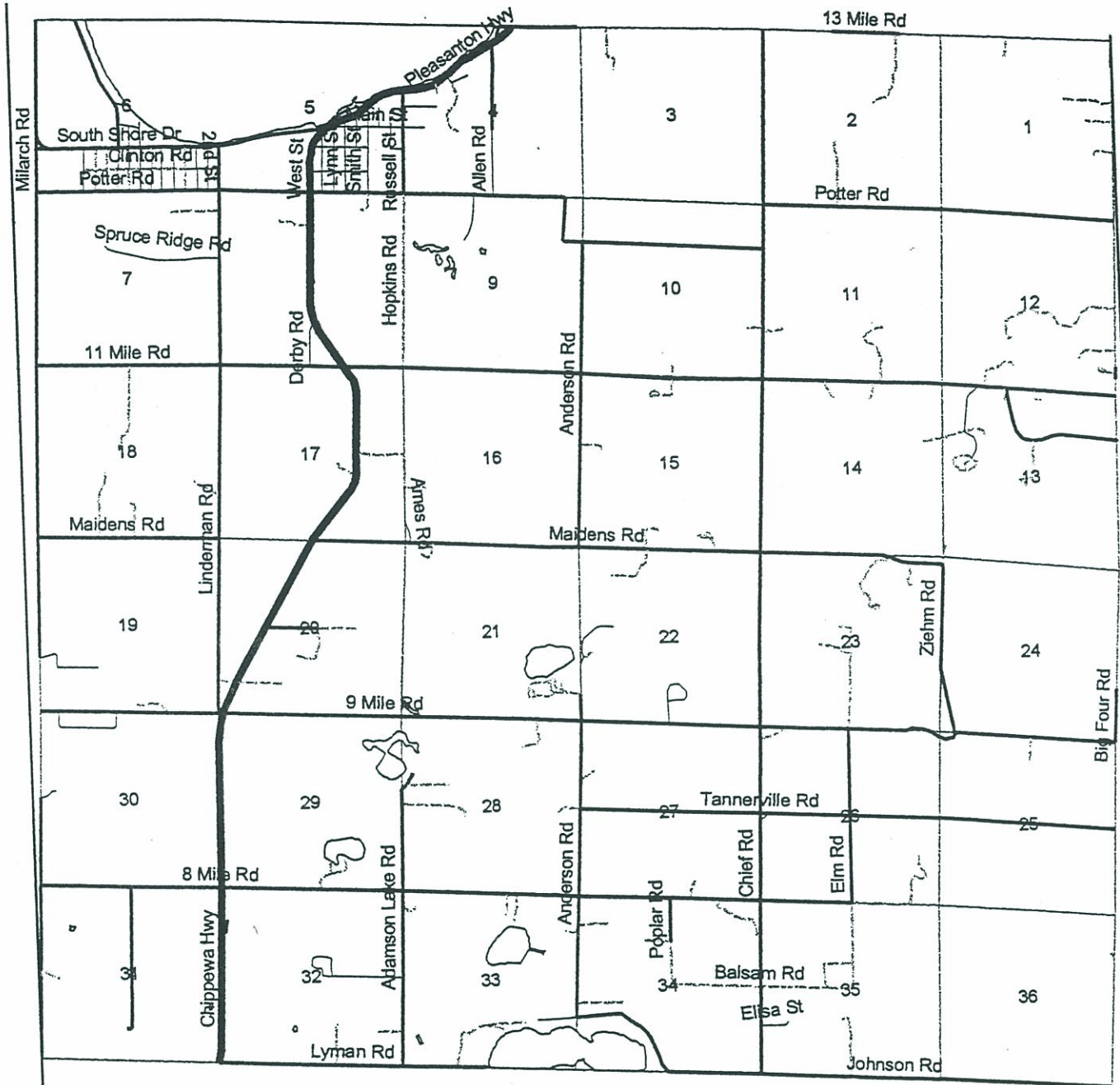
Reproduced with permission of Rockford Map Publishers, Inc. Rockford, IL



13000N  
12000N  
11000N  
10000N  
9000N  
8000N  
7000N

SEE PAGE 16

# BEAR LAKE TOWNSHIP ROAD MAP



## Legend

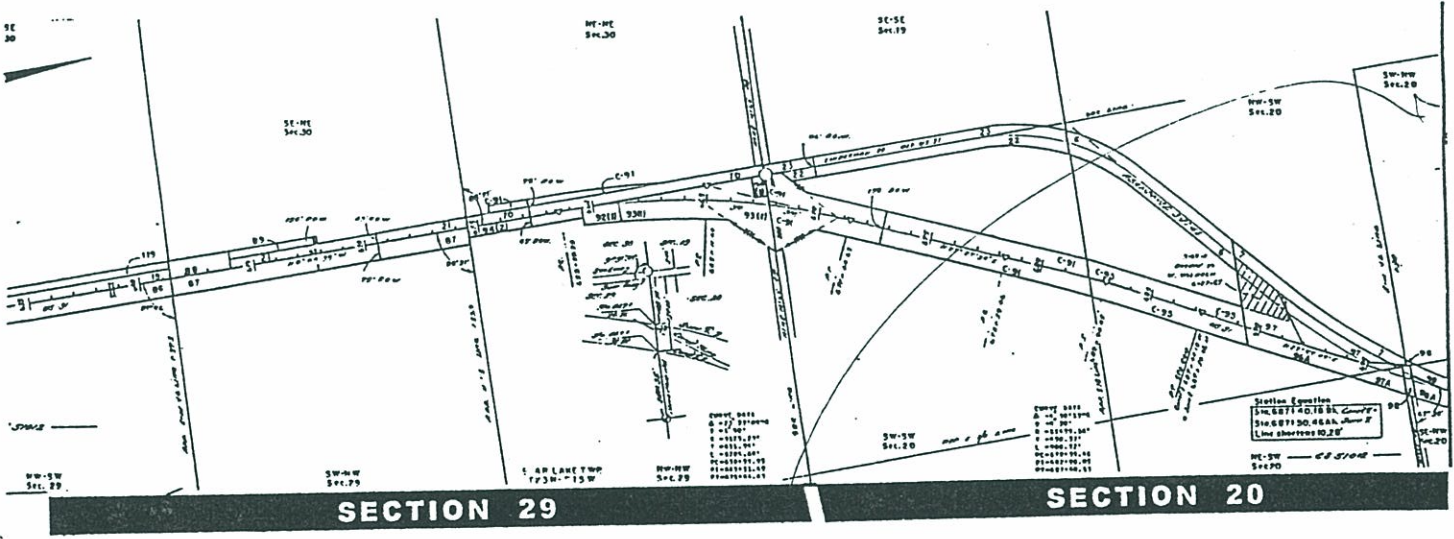
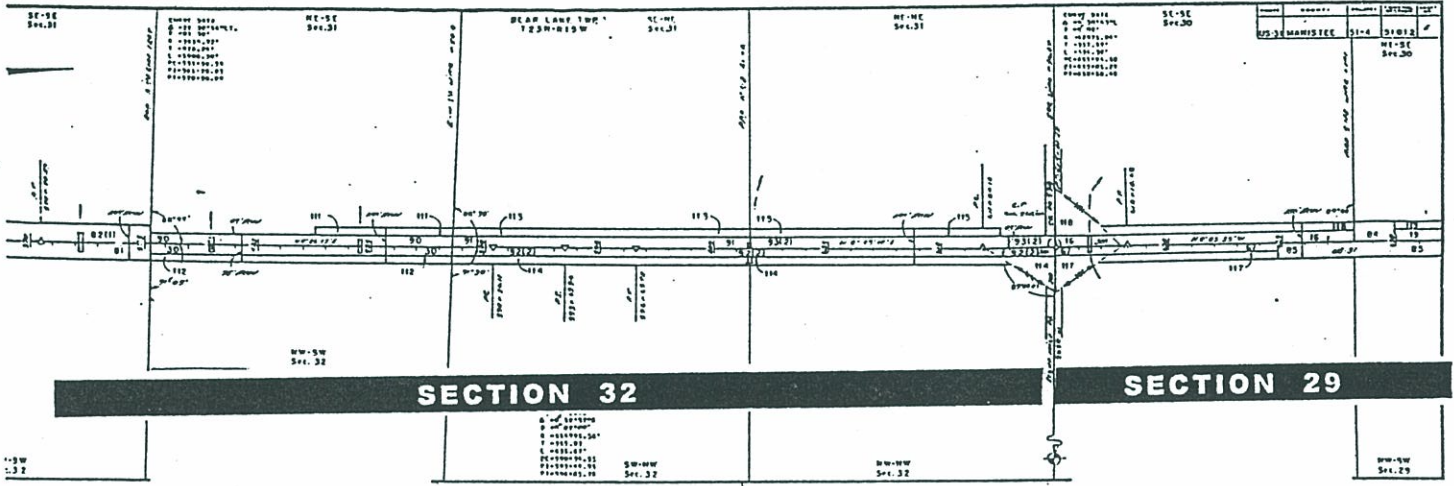
### Roads

- Two Tracks
- Highways
- Minor Roads
- County Roads
- Lakes
- Sections



# BEAR LAKE TOWNSHIP MAP

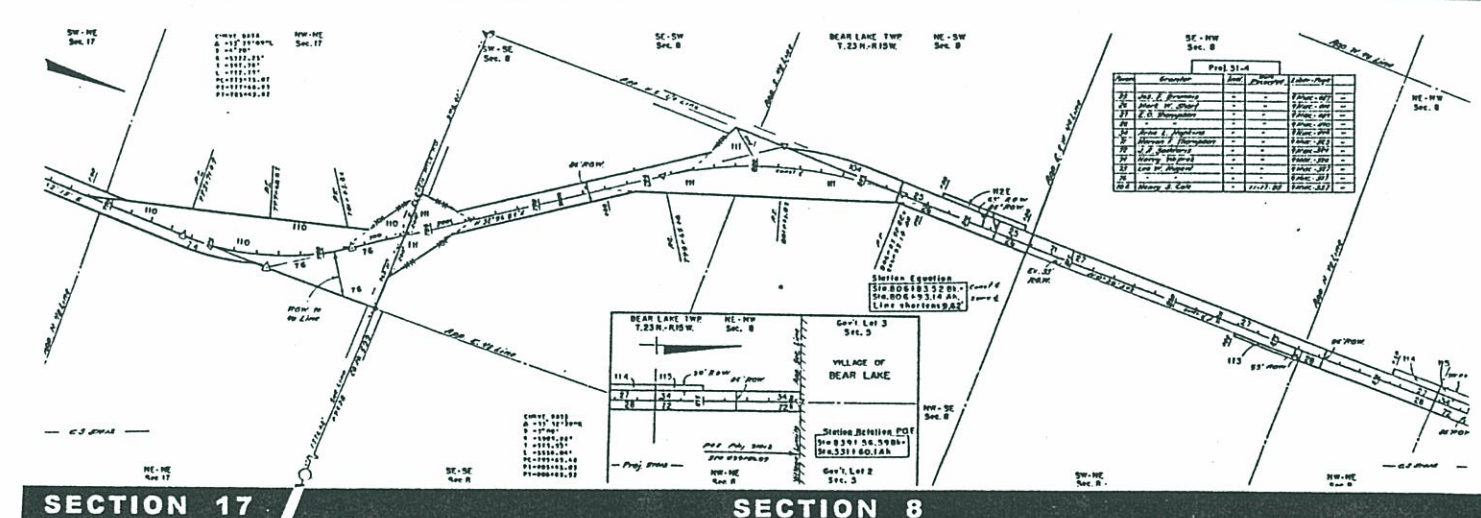
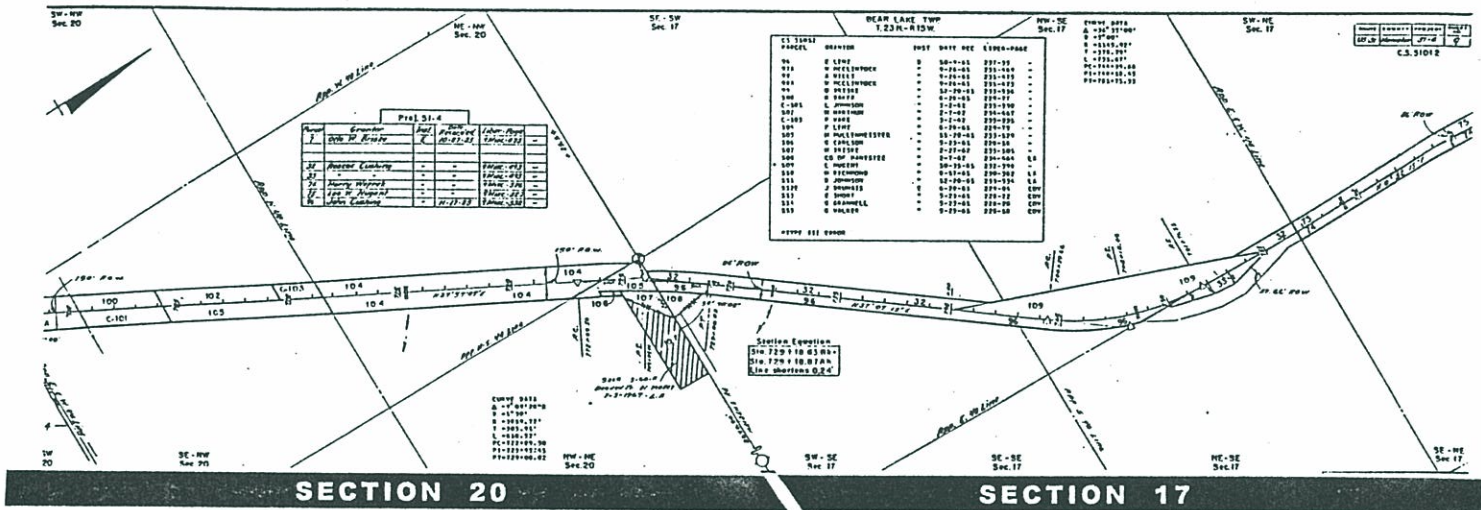
## Road Right Of Way





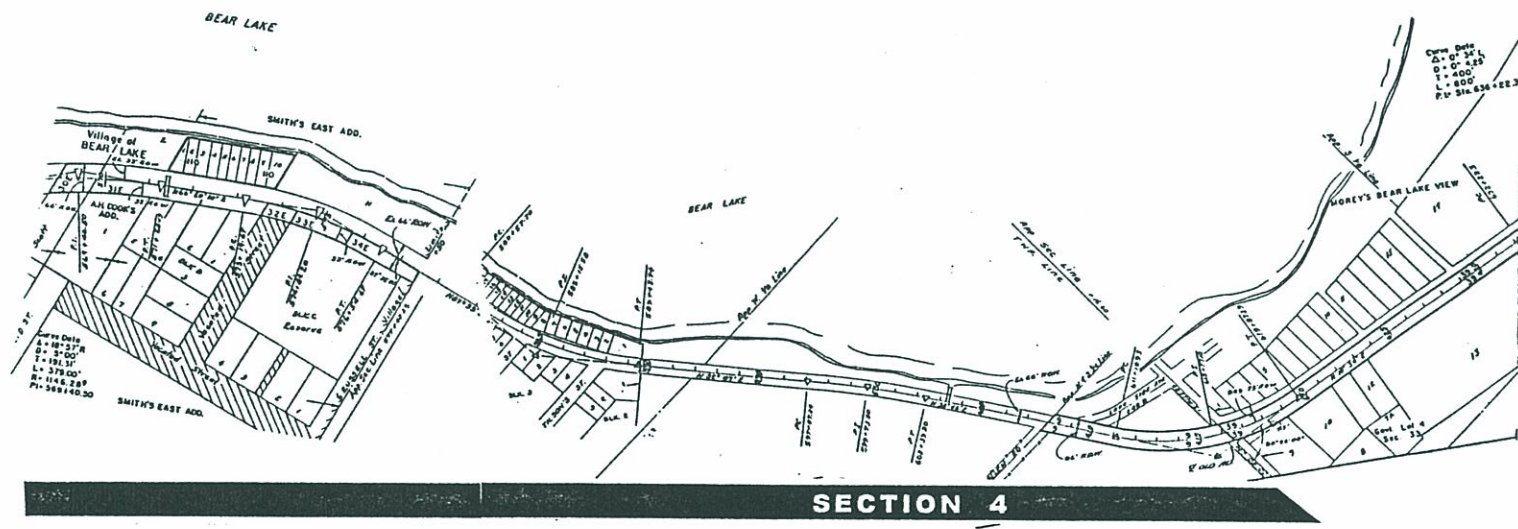
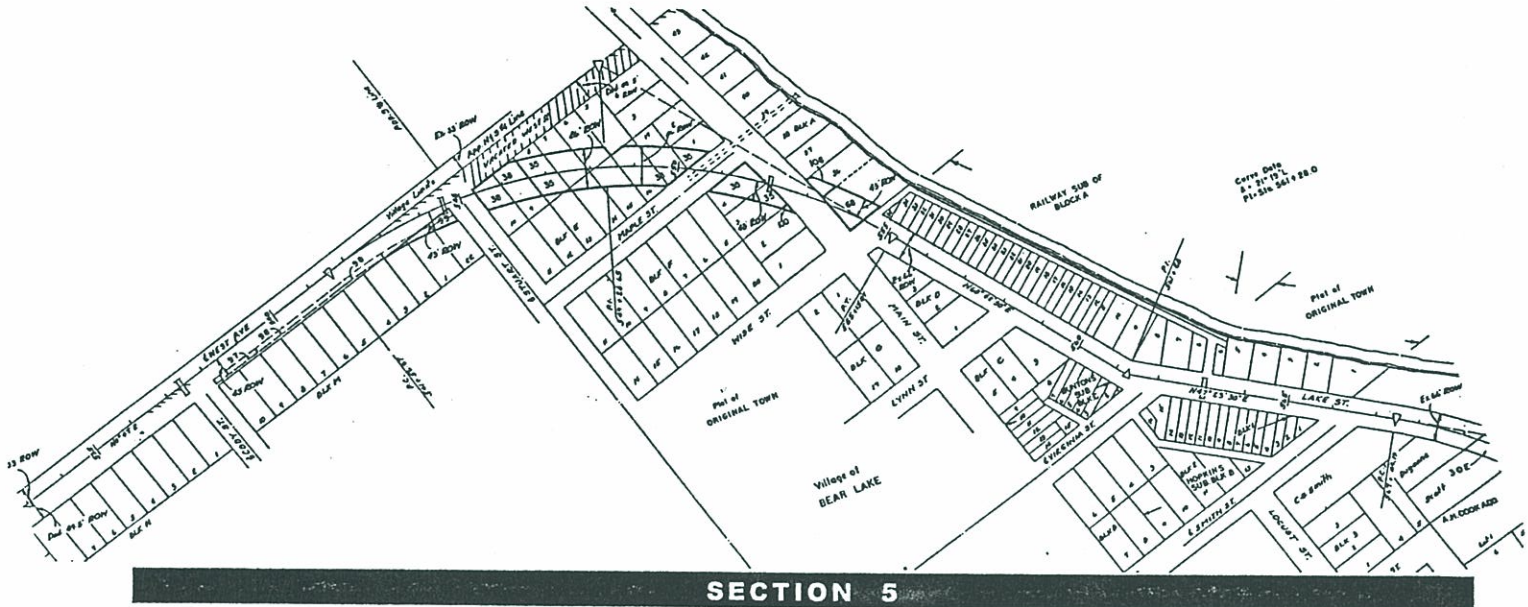
# BEAR LAKE TOWNSHIP MAP

## Road Right Of Way

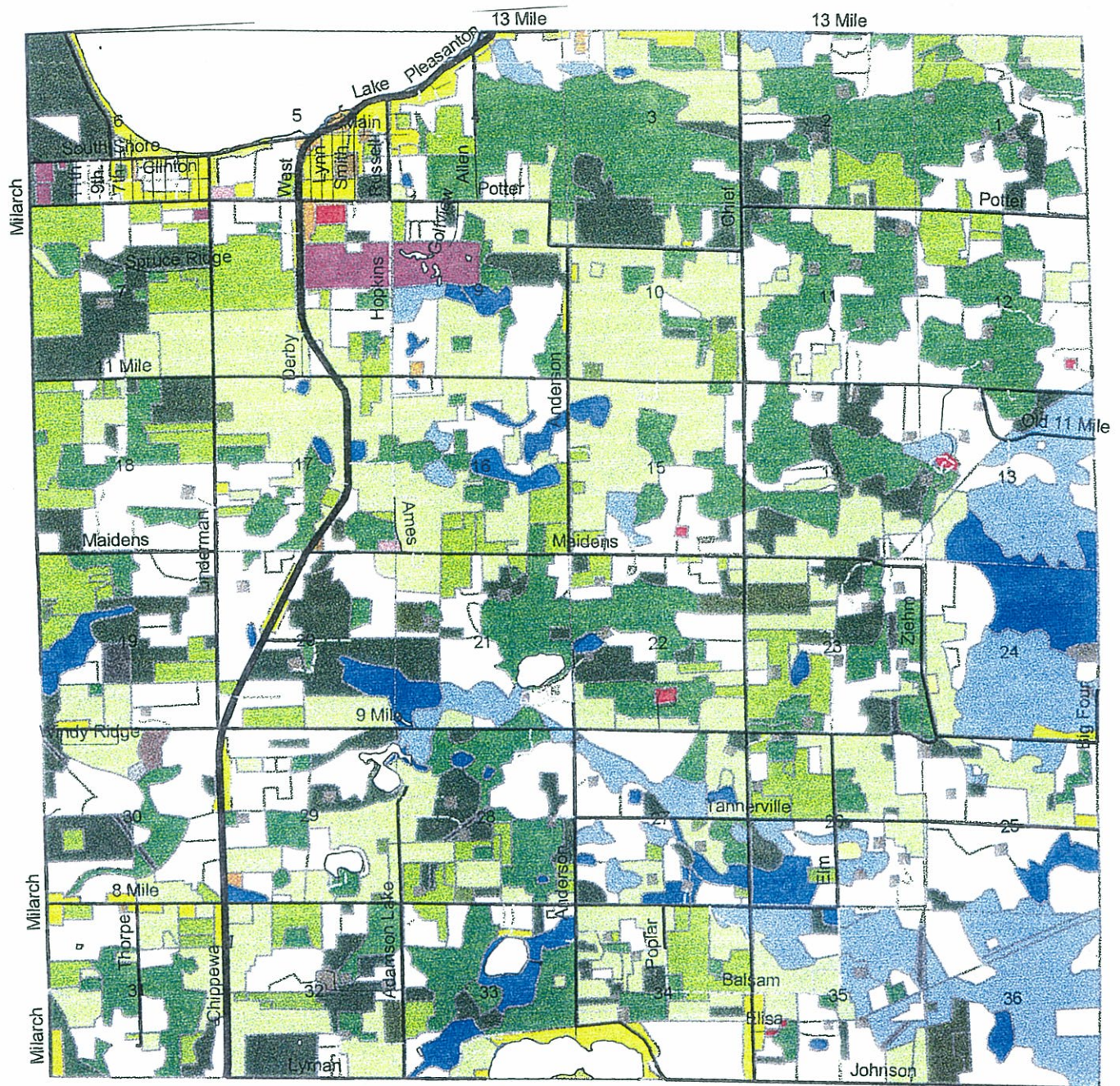


# BEAR LAKE TOWNSHIP MAP

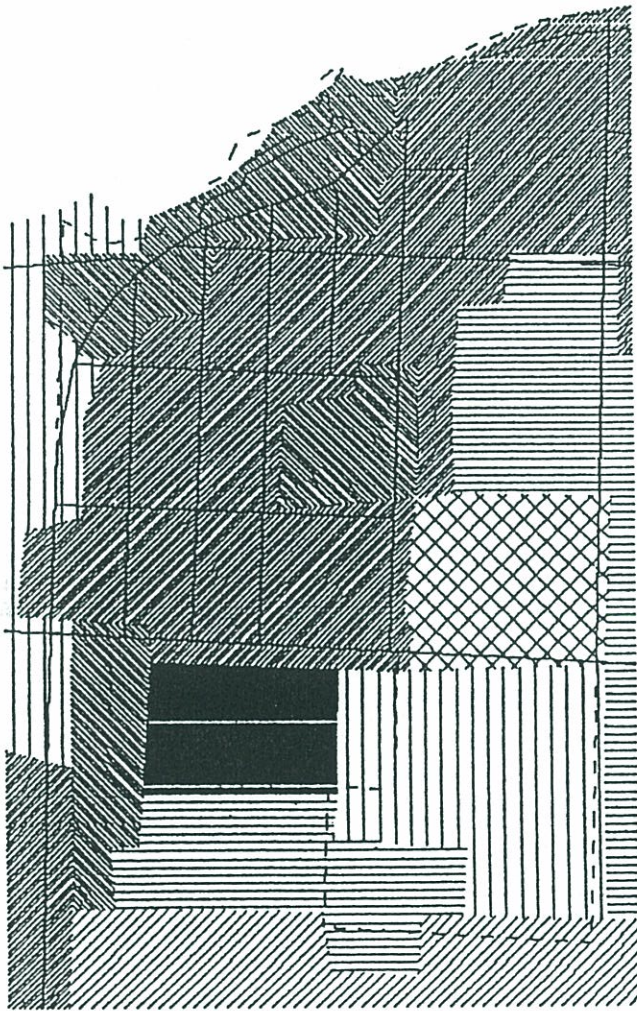
## Road Right Of Way



# BEAR LAKE TOWNSHIP LAND USE MAP



# BEAR LAKE VILLAGE LAND USE MAP



## BEAR LAKE VILLAGE

### LAND USE MAP

#### Legend

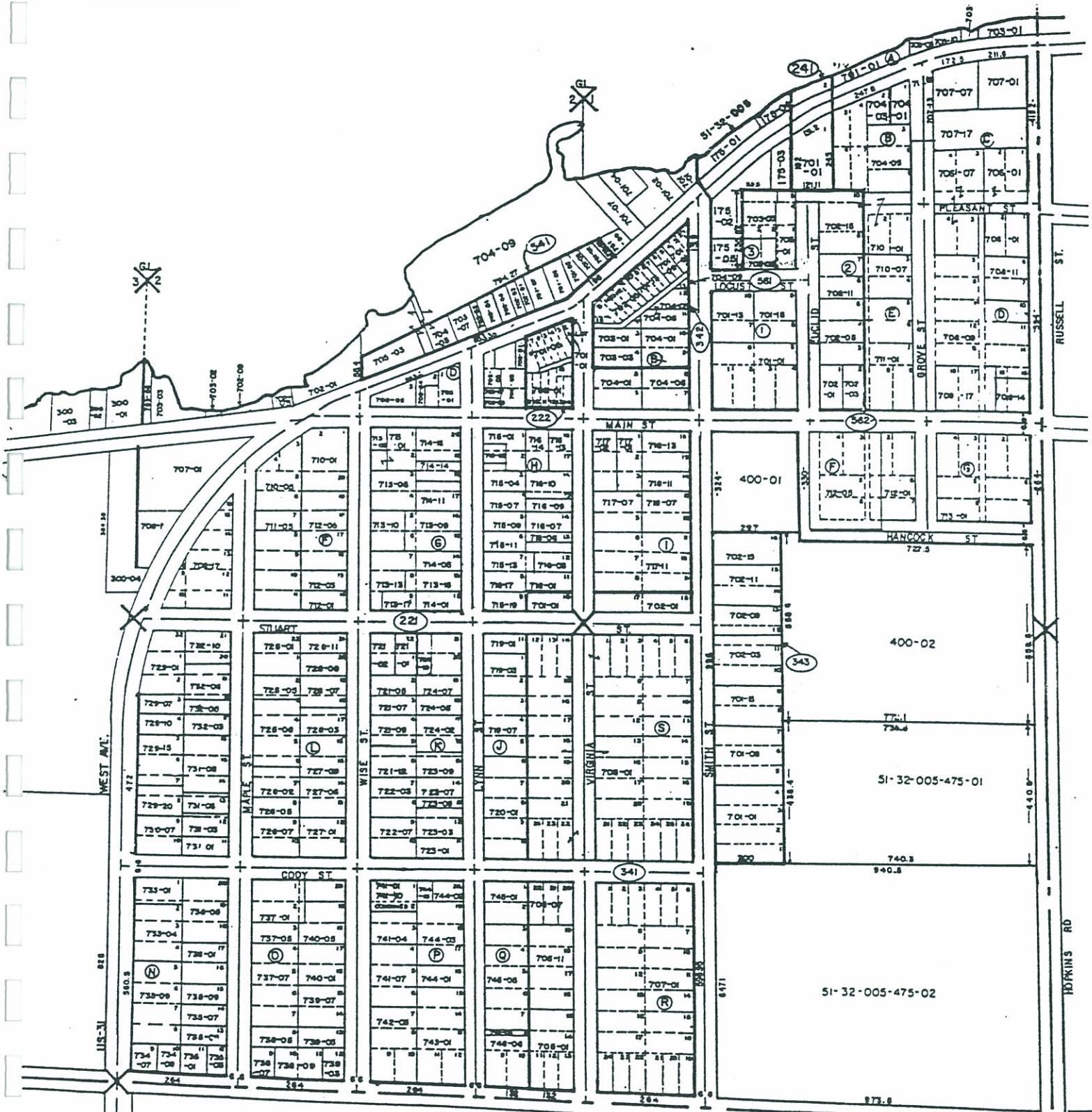
-  Residential
-  Commercial
-  Industrial
-  Transportation
-  Extractive
-  Open (parks) and
-  Agriculture
-  Range Land (field
-  Forest
-  Water
-  Wetlands
-  Barren

Manistee Planning  
Dept. Nov. 17, 1995

1982 Data

# VILLAGE OF BEAR LAKE

Bear Lake Sec 6 T23N R15W

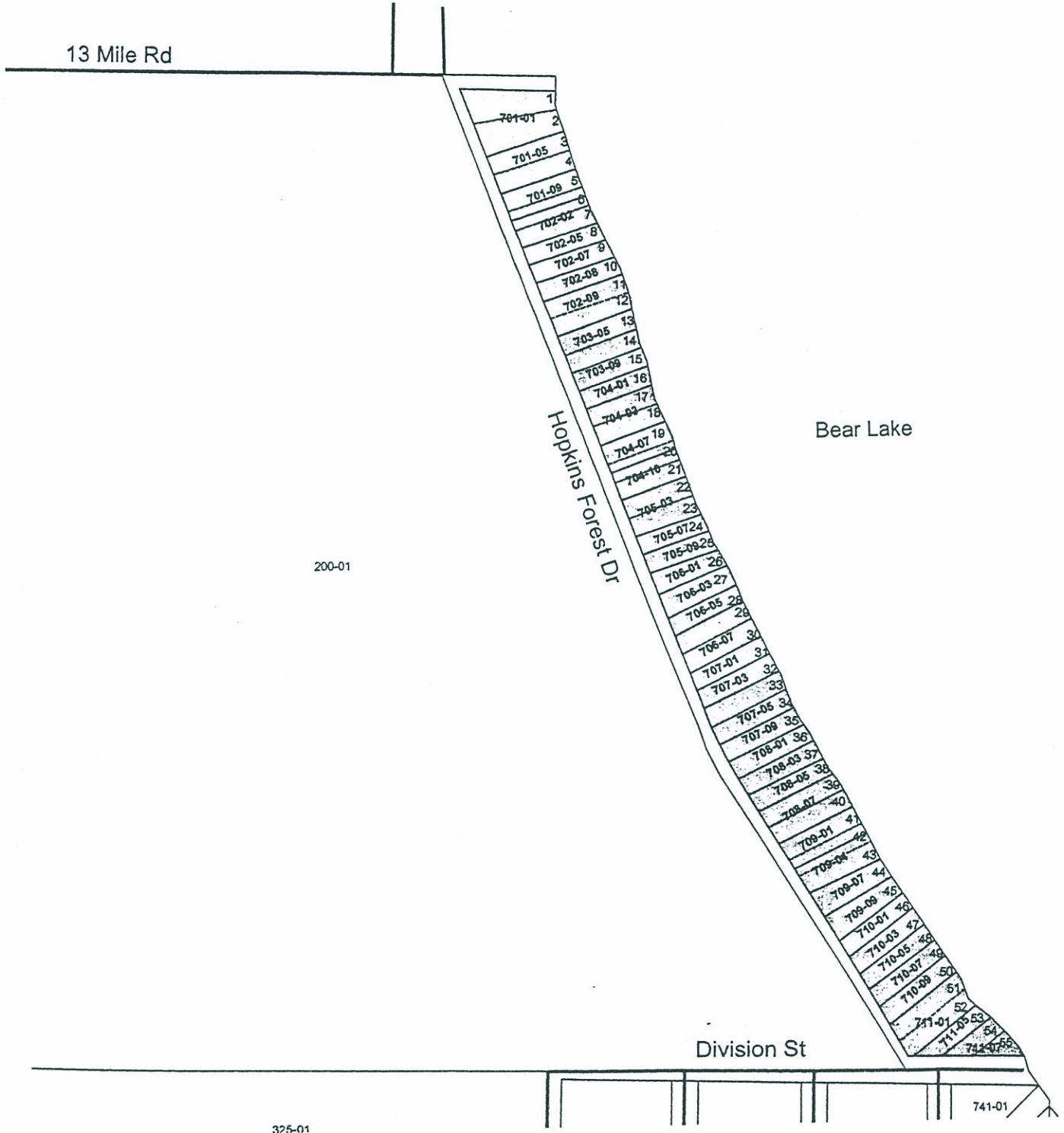


- PLATS**
- 221-VIL OF BEAR LAKE
  - 222-BUNTONS SUBD. BLK. C VIL OF BR. LK.
  - 241-A.H. COOKS ADD TO VIL OF BR. LK.
  - 341-HOPKINS
  - 342-HOPKINS SUBD. BLK. B VIL OF BR. LK.
  - 343-HOPKINS HOMESTEAD ADD. TO VIL OF BR. LK.
  - 541-RAILWAY SUBD. BLK. A VIL OF BR. LK.
  - 561-SMITHS ADD TO VIL OF BR. LK.
  - 562-SMITHS E. " " VIL OF BR. LK.

BEAR LAKE TWP T23N, R15W  
 SECTION 6  
 51-02-005  
 and  
 51-32-005

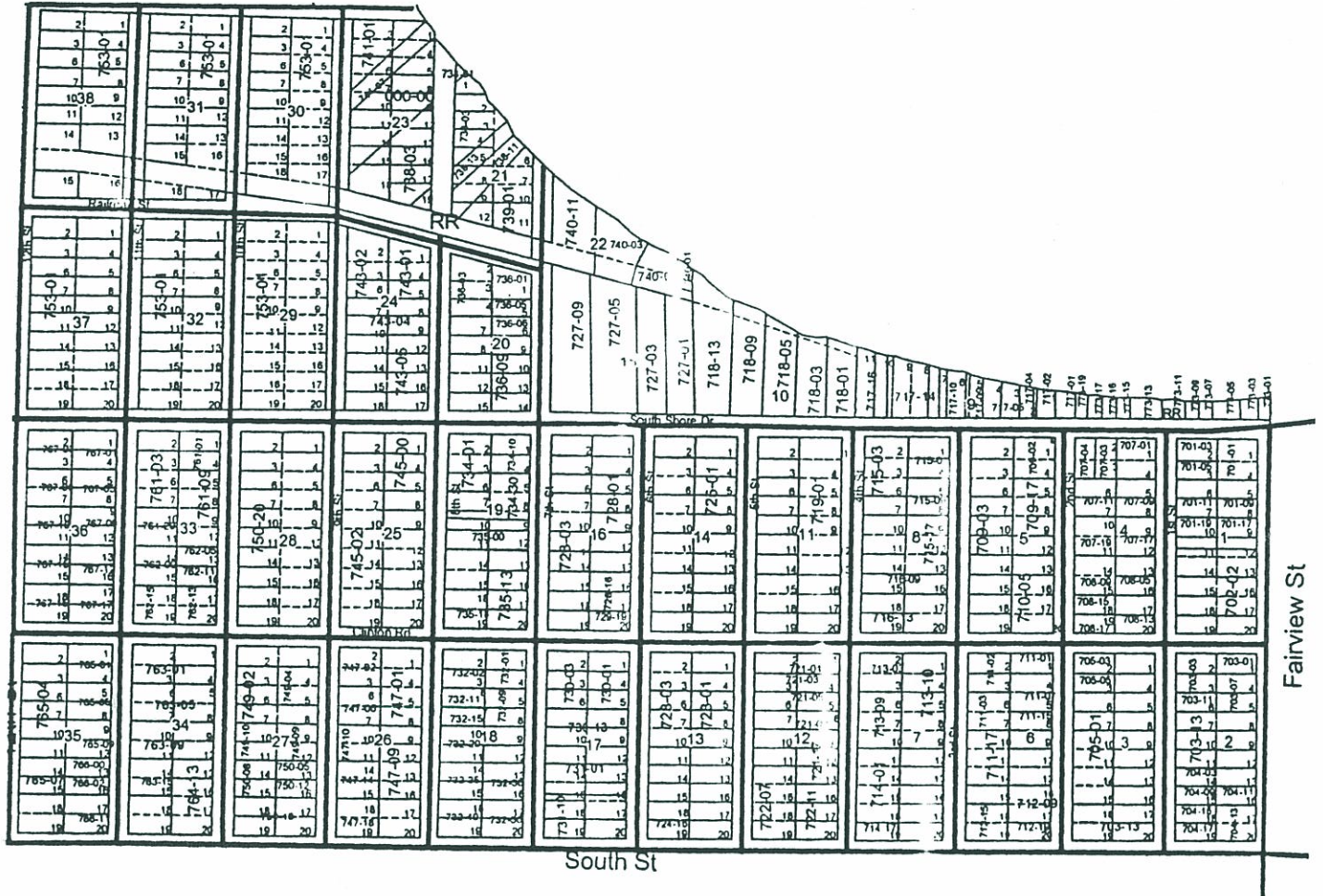
# HOPKINS FOREST SUBDIVISION

*Bear Lake Sec 6 T23N R15W*



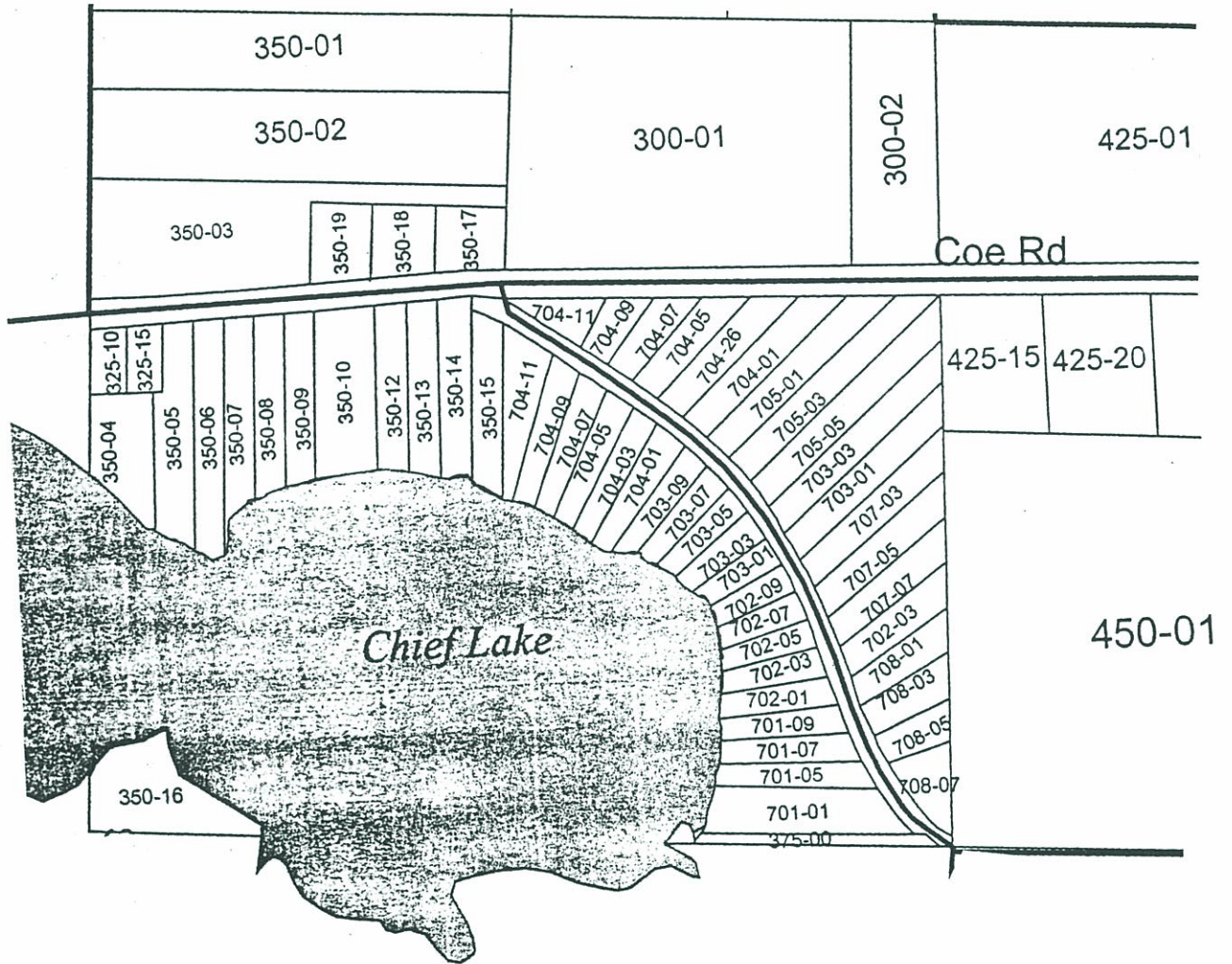
# WILDWOOD SUBDIVISION

Bear Lake Sec 6 T23N R15W



# CHIEF LAKE SHORES SUBDIVISION

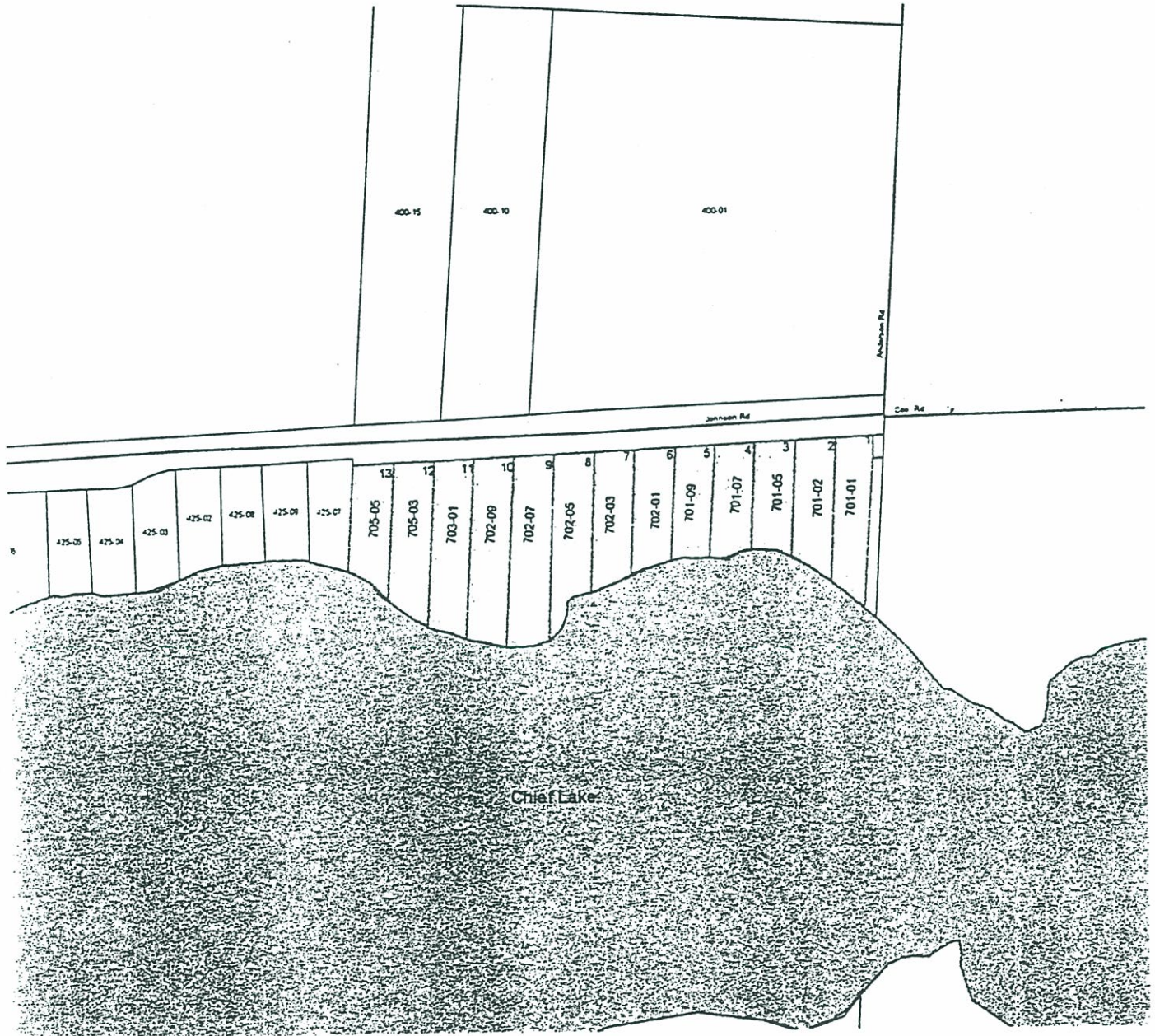
*Bear Lake Sec 34 T23N R15W*





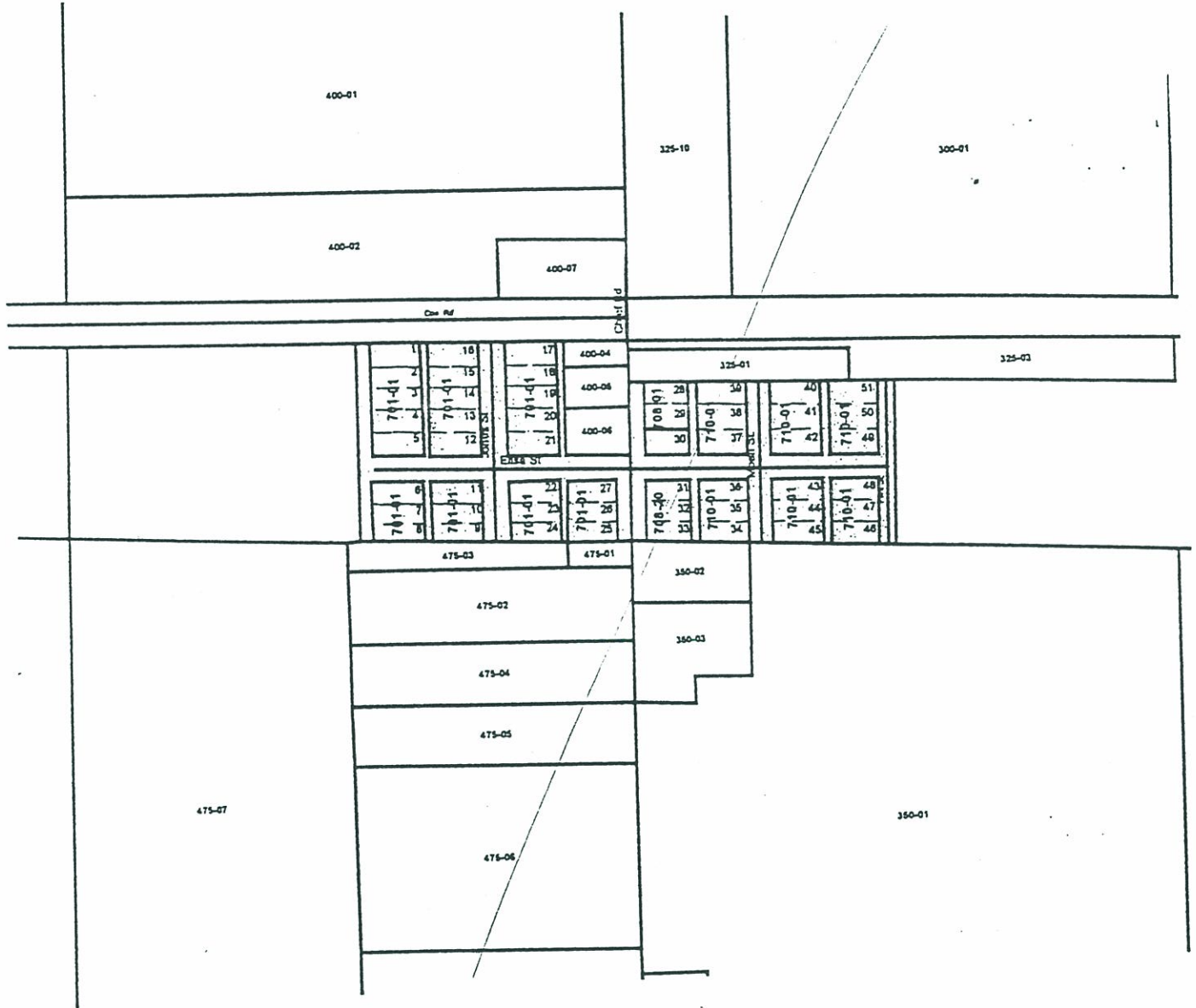
# MARTINS NEST SUBDIVISION

*Bear Lake Sec 33 T23N R15W*



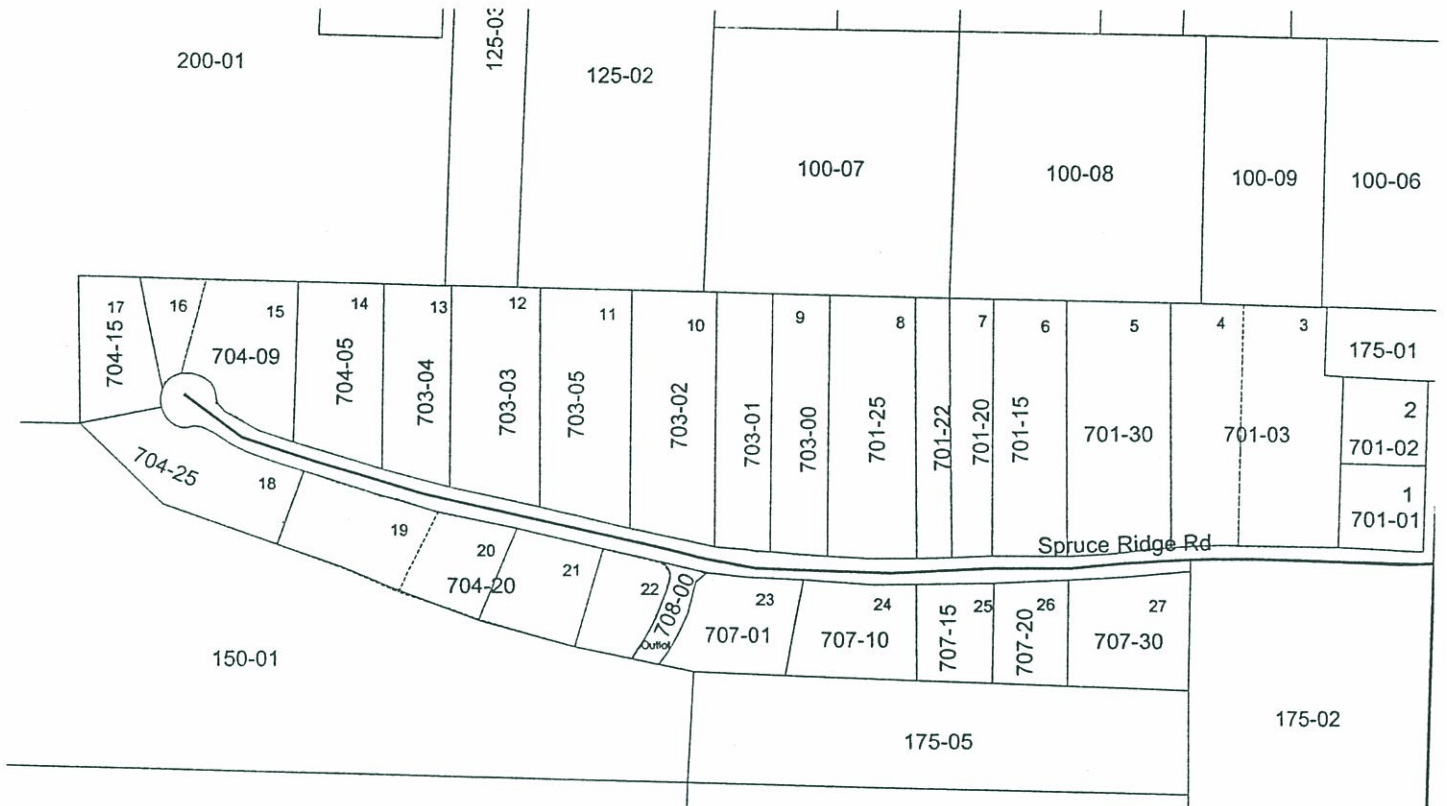
# VILLAGE OF CHIEF SUBDIVISION

*Bear Lake Sec 35 T23N R15W*



# SPRUCE RIDGE SUBDIVISION MAP

*Bear Lake Sec 7 T23N R15W*



# **PARKS AND RECREATION**

## **HOPKINS PARK**

Located in Section 5, in the Village of Bear Lake on the south shore of Bear Lake. The site was originally the lumber yard for the Hopkins Saw Mill. After the lumber cut was finished, Mr. George W. Hopkins undertook the gigantic task of creating a park. Hundreds of loads of earth was hauled in, grass was sown and trees planted. After the work was completed, the two acre park was donated by the Hopkins family to the Village of Bear Lake to be used by the people of the area. The first campers arrived in 1925.

The facilities include 30 campsites each of which have a fire pit ring and 50, 30 and 20 amp electrical service. There are 50 picnic tables, 2 grills and a 30 ft x 20 ft. shelter. Restroom and coin operated showers are located in the basement of the Village building above the campgrounds. There is a drinking fountain, 3 water taps and a dump station for recreation vehicles, motor homes and trailers. The children's play area consist of 1 regular size set of swings and 2 small swing sets with slides. There are benches and adult swing benches throughout the park.

## **HARRY D. COSIER MEMORIAL PARK**

*Formally known as the "unnamed park"*

The Park at Wise and Stewart Streets was donated to the Village of Bear Lake on November 19, 1929 by Mr. and Mrs. H.M. Cosier to become a memorial to their departed son Harry D. Cosier. Facilities include a tennis court and 2 basketball boards.

## **TENNIS COURTS**

Tennis courts are located on school property on Smith Street. Built with monies from the Triginta Club of Bear Lake.

## **COUNTY HIGHLAND'S GOLF COURSE**

Established in 1966 by local businessmen and area citizens. The course originally started with 9 holes and has since expanded to 18 holes, club house, pro-shop, restrooms and drinking fountains on the course.

## **BOAT LAUNCHING SITES**

On Bear Lake there is only one boat launching site located at Hopkins Park.

On Chief Lake there is one boat launching site located off Lyman Road.

# **POLICE AND EMERGENCY SERVICES**

## **9-1-1 EMERGENCY NUMBER**

Your chance of saving a life - even your own - depends on how many seconds it takes you to call for emergency help. Now, the fastest way to get help is to dial 9-1-1.

In the Fall of 1993, Manistee County initiated a "9-1-1" Central Dispatch. Since that time, all emergency services are dispatched from Central Dispatch which is located at the Sheriff's Department Complex. Control Dispatch consists of one director and 10 dispatchers.

An experienced dispatcher is ready to help you at any hour of the day or night. After you give the information needed, assistance will be sent the quickest way possible.

Remember 9-1-1 for all your fire, medical and police emergencies, it could save your life or the life of someone you love.

## **BEAR LAKE TOWNSHIP FIRE DEPARTMENT**

Bear Lake has a volunteer reimbursed department of approximately 17 members. The department members are required to have a minimum of Fire Fighter I training.

The Department has three emergency medical technicians (EMT's) and five medical first responders.

The Township purchased a new 2000 International Fire Truck that is equipped with a compressed air foam system. In addition the Department has a 1976 Ford Fire Truck Pumper, a 1987 Ford 2000 gallon Tanker, a 1987 Ford Rescue Truck and is the location of the Manistee County Mobile Cascade system with four 5000 psi cylinders and filling station for air pac cylinders.

## **AMBULANCE SERVICE**

The ambulance service for Bear Lake Township is from West Shore Medical Center. They have four ambulances, one of these stationed at the Kaleva Fire Department for quick response to the needs of the northern part of the county. They are staffed by paramedics. In addition, they have an echo unit which is a non-transport advanced life support vehicle.

They are currently staffed with eleven full time paramedics. They also have reserve personnel which consists of three paramedics, seven EMT specialists and eight basic EMT's. In addition, they also have an ALS (Advanced Life Support) bike squad that is a special event group, which consists of paramedics and EMT personnel.

## **SHERIFF'S DEPARTMENT**

The Sheriff's Department located in Manistee County consists of the Sheriff, Undersheriff, two Patrol Sergeants, one Detective Sergeant, one Narcotics Officer, one Deputy who performs court bailiff duties, two Animal Control Officers, six Deputies who perform patrol duties, one full time Water Patrol Deputy and two seasonal Water Patrol Deputies.

## **STATE POLICE POST**

The State Police Post consists of one Lieutenant, three Sergeants and fifteen Troopers. They patrol all of Manistee County plus the four southern most townships of Benzie County.

There is a Sergeant on the desk for eight hours a day, from 8:00 a.m. to 4:00 p.m. and a car on the road 24 hours a day.

# MANISTEE COUNTY TRANSPORTATION

## COUNTYWIDE DIAL-A-RIDE

Morning and Afternoon - 6 days a week

24 Hour Advance Reservation Required

*General Manager: Dick Strevey*

**Call 231-723-6525 or 1-800-775-7433**

For Reservation or More Information

*Conference Room Available For Rent*

Free Transportation To Munson Hospital

Monday - Friday: Will Pick Up At Home

# LIBRARY

## *Keddie Norconk Memorial Library*

In the fall of 2000, Bear Lake received word that previous residents, John and Genevieve Martin, wished to make a major contribution toward the cost of constructing our community's first "real" library.

They also asked that the new library be named, not for themselves, but for two long time Bear Lake residents Luke Keddie, previous owner and editor of the Pioneer Press and Dr. Norconk, our first true physician.

Bear Lake Township, the Village of Bear Lake and Pleasanton Township have come together and created the legal entity, the Keddie Norconk Memorial Library Board, to build and administer our new library with the Manistee County Library Service providing professional staffing and circulation materials.

Property on Virginia Street for the construction was donated by Ken and Diane Edwards.

Ground was broke on the site on September 28, 2001, just 17 days after the World Trade Center tragedy and it was very much on our minds. As if in response to our determination to keep the ideal of freedom of expression for all alive, our entire community has responded to our equal determination to build the best library we possible could.

The original Martin donation, of \$150,000.00, has been doubled in the form of volunteer labor, expertise and cash. We have been able to purchase one of the best types of library shelving available by virtue of a whole "host" of "Angels" - generous service clubs and individuals who donated the cost of each section. In return, they will see their generosity forever honored with a porcelain "Library Angel" plaque, also donated by MarEII Porcelain of Bear Lake.

A \$5,000 grant was received from the Oleson Foundation toward the installation of a heating, ventilating and cooling system. Other grant funding is being sought and donations are still being accepted. Oakgrove Cremation Service donated the Corner Stone.

Graphic and interior design needs have been donated. Indeed so many others have contributed that we have created a web site at [www.bearlakemichigan.org/library.html](http://www.bearlakemichigan.org/library.html) to document the whole project and honor all who have and are playing a role in realizing this wonderful project.

Even our local school children had a chance to help build the new Library this spring. They were invited to march down the Virginia Street hill and lay bricks - under journeyman supervision - for the 2,400 square foot library branch. Superintendent Greg Webster, was enthusiastic about giving each child the experience of taking part in the construction. It will be something they can tell their own children and grandchildren about in decade to come.

Children will again get a chance to contribute to our library history when they are invited to write their thoughts and hopes for their present and future in a "letter to the 2052". Area residents will also get the chance to contribute their "letter" to an archival time capsule that will be stored inside the library then opened 50 years from now.

Each of the three units of government have also committed funds to designate a section of the library for community history and resources. We have purchased a secure display case and a section of shelving to provide a central location for governmental and community information.

Abonmarche Consultants Inc., architects of Manistee designed the library building to meet all State and Federal building, fire, Americans with Disabilities Act and environmental codes. Library Design Associates of Plymouth, who also were part of the new Traverse Area District Library and Wyoming Public Library design team, consulted on the interior to ensure it met American Library Associate and Library of Michigan standards.

The library opened in early June 2002, with a dedication ceremony on July 13, 2002. July 12th, 2002 was designated Children's Day.

An Endowment Fund was created to ensure future maintenance, matching grant financing, special programs and capital outlay funds.

The partnership between the people of Bear Lake and the Manistee County Library Service will provide a first class addition to the delivery of professional library information services to the people of northern Manistee County. It will realize our joint commitment to literacy, education and community pride. This is our library and we can all take pride in what we have accomplished together.

## SCHOOLS

Bear Lake Schools is the public school system that serves both Bear Lake and Pleasanton Township residents. A small number of students in the area also attend Manistee Catholic Central, Trinity Lutheran and Bear Lake Baptist private schools.

Bear Lake Schools were accredited by the North Central Association in 1992. The school provides K-12 grad programs at the Bear Lake facility. Adult Education Programs for Manistee and Benzie Counties are also provided at several locations. Bear Lake School serves as a center for West Shore Community College evening programs. Both adult and day school students attend West Shore Community College technology programs during the day.

The main school building represents six different constructions since 1951. The most recent addition (2002) provided for 4 new elementary classrooms, 5 new high school classrooms, new central office, new regulation size gymnasium and general refurbishing of the building.

Bear Lake School participates in a cooperative athletic program with Onekama and KND Schools in order to increase opportunities for students. Varsity sports available are:

Cooperative sports with Onekama - *Football, Track and the Ski Team.*

Cooperative sports with KND - *Golf.*

Cooperative sports with Bear Lake - *Cross Country.*

Also available at Bear Lake School is: *Baseball, Softball, Girls and Boys Basketball, Girls Volleyball and Cheerleading.*

Special programs are: *After-school Program and KCLICK - middle school computer club.*

## BEAR LAKE SCHOOL ADMINISTRATORS

The Board of Education for Bear Lake Schools in 2001-02 is as follows:

*President: Dr. Richard Bobian*

*Vice-President: Terri Alkire Schmidt*

*Secretary: Wanda Schafer*

*Treasurer: Nena Girven*

*Trustee: Walter Armstrong*

*Trustee: Eric Smith*

*Trustee: Charlie Brooks*

The Bear Lake Administration for 2001-02 is as follows:

*Superintendent: Greg Webster*

*High School & Elementary Principal:*

*Mike Matesich*

*Athletic Director: Barb Farfsing*

## SCHOOL FORESTS

Bear Lake School Forests consists of 246 acres, primarily planted with pine trees, located at West Hopkins Forest Drive and South Shore Road and Norconk and Myers Roads.

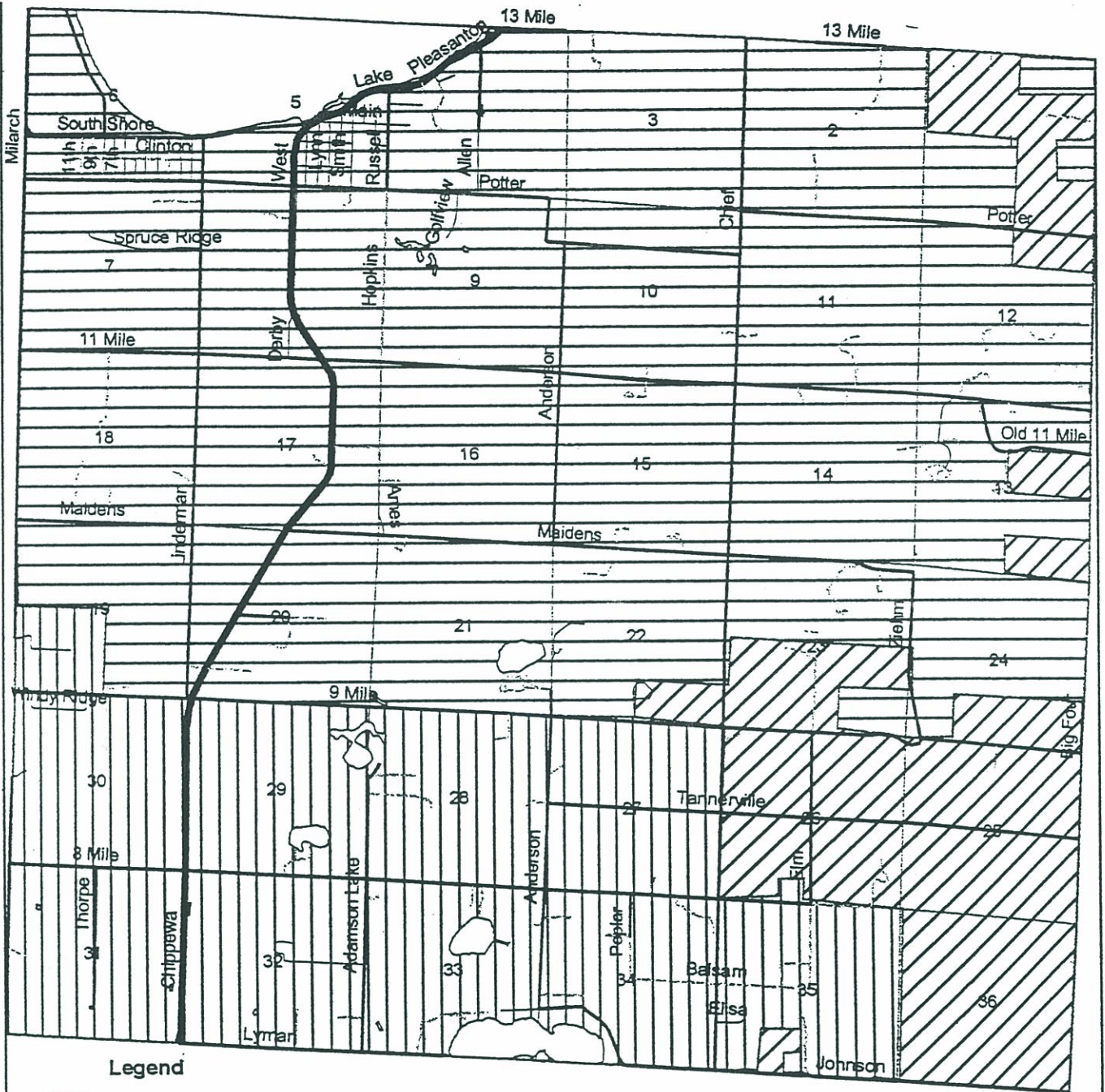
This land is farmed for wood products which are periodically cut for selling.

Bear Lake School athletic facilities on South Shore Road at Milarch Road consists of 40 acres. The facilities include a Baseball Field, a Softball Field, a Cross Country Course and 2 portable buildings.

In the future, one of these building will be used by the athletic boosters incorporating a snack/food bar.



# BEAR LAKE TOWNSHIP SCHOOL DISTRICTS MAP



### Legend

#### Roads

- Two Tracks
- == Highways
- Minor Roads
- County Roads

- Lakes
- Sections

#### NAME

- Bear Lake
- ▨ Kaleva Norman Dickson
- ▩ Onekama Consolidated



# BEAR LAKE TOWNSHIP CEMETERIES

## Bear Lake Township Cemetery

The old part of the Cemetery was deeded October 2, 1869, by Jaemina Cushing to the Board of Health by Bear Lake Township.

The Western part of the Cemetery was purchased from Edwin and Bernice Evens on October 30, 1936. Block 7, 8, 9 & 10 are available for purchase.

There are 7.1+ acres in the entire Cemetery which is located on Maidens Road in Section 16 and 17 in Bear Lake Township.

## Fairview Cemetery

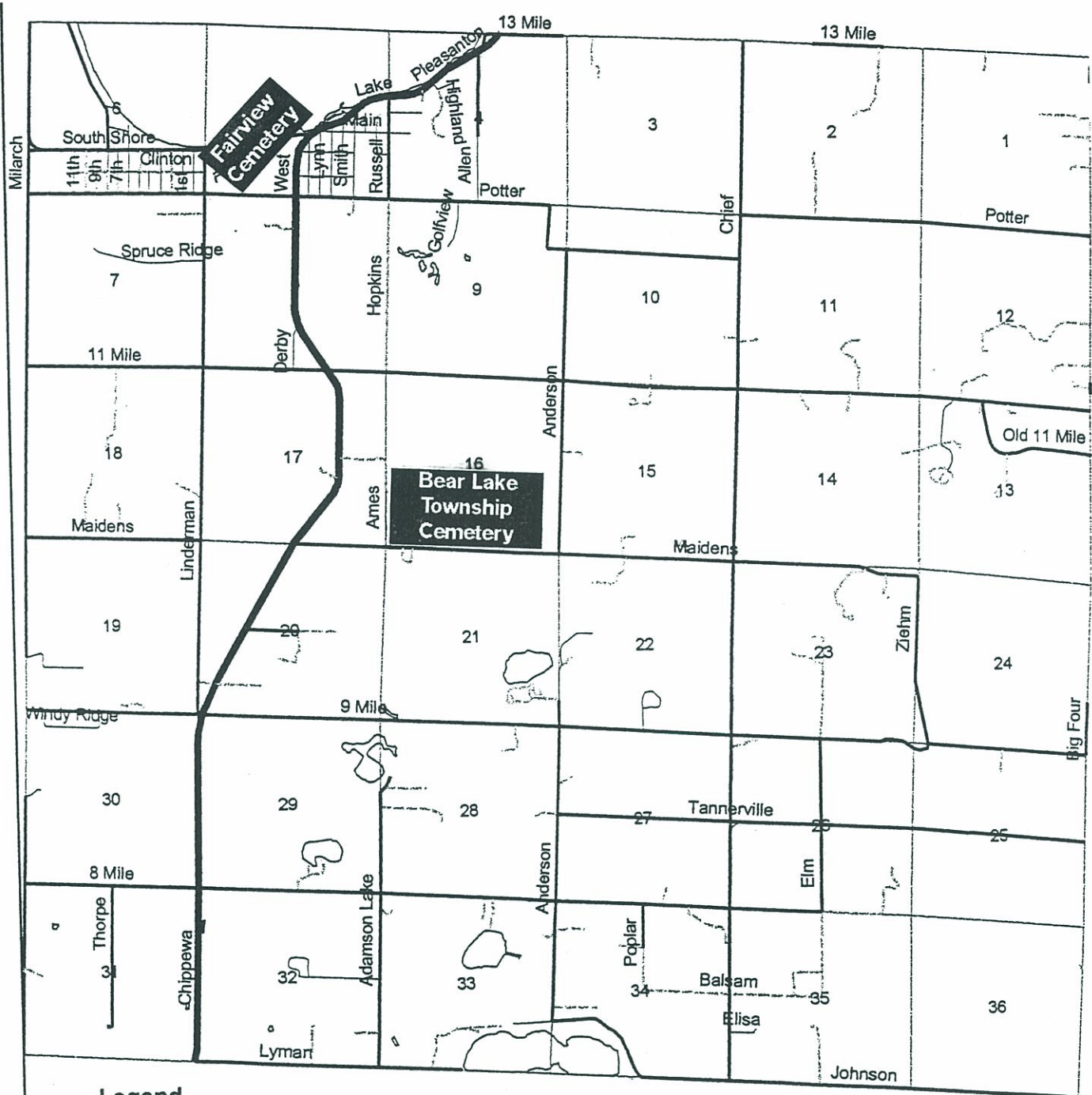
By all available records Fairview Cemetery must have been privately owned by Arlie L. Hopkins.

The old Cemetery has five acres (no lots available in this section) and the new one has ten acres and is plotted out. It was purchased from Benjamin E. and Mary Matthews on August 24, 1951.

Each lot has two graves. Block Q and R are available for sale. Blocks U, V, W, X, Y & Z will be replotted before they are sold.

These cemeteries are on the corners of Linderman and Potter Road (Sections 5 & 8) in Bear Lake Township.

# CEMETERIES IN BEAR LAKE TOWNSHIP



### Legend

- Roads
- Two Tracks
- == Highways
- Minor Roads
- County Roads
- Lakes
- Sections

